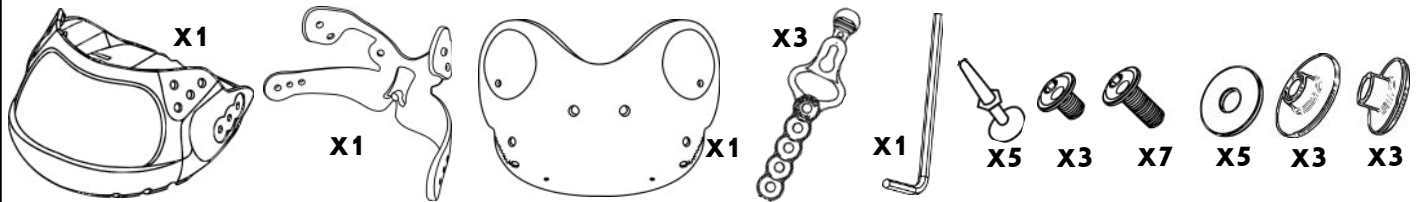


EVOBOOT 2021

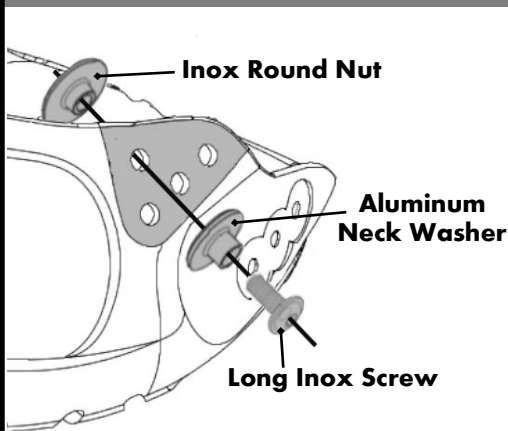
Assembling, Adjustment & Use Guide

CONTENT



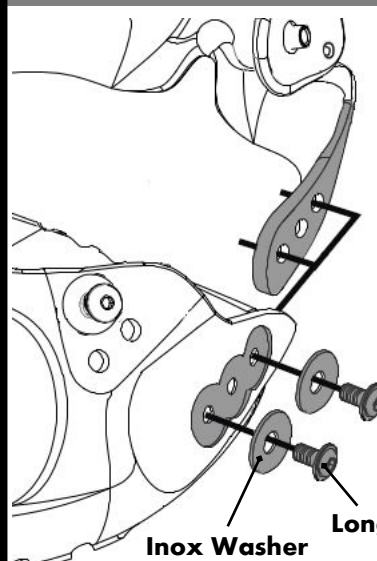
ASSEMBLING → Mounting your Evos ONLY takes 4 easy steps & 5 minutes!

Step 1 Mount the PIVOT



The upper hole is the most used (90% of the times) BUT you can change it and use the one that fits best to your horse's conformation.

Step 2 Mount the BULB SHIELD SUPPORT

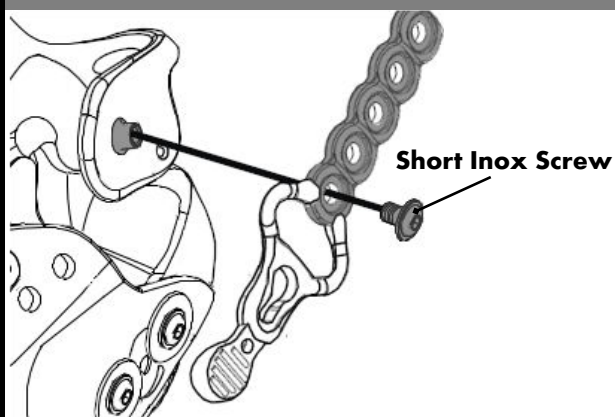


For standard hooves the use of 1 screw per side and symmetric assembly is advised.

For non standard hooves you can use 1 or 2 screw per side and asymmetric assembly to fit your horse's conformation if you need it.

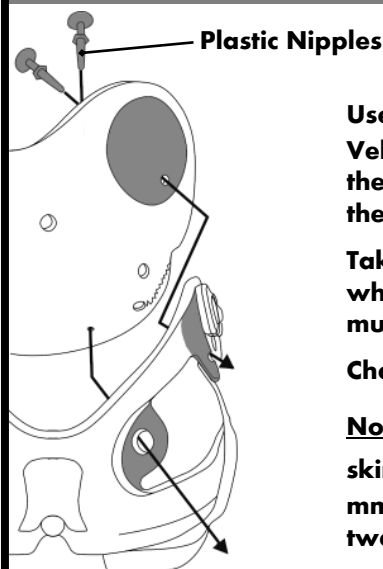
Note: you don't need any nut to assemble both parts because they're inserted into the Bulb Shield's plastic.

Step 3 Mount the ELASTOSTOP DIRECT



The 2nd hole is the most used (90% of the times). If you're using 3rd to 5th might mean that the current Bulb Shield is too small for your case.

Step 4 Mount the 2ND SKIN



Use the 4 plastic nipples and the Velcro to attach mechanically the neoprene's second skin to the Bulb Shield's Support.

Take it out to easily clean it when mud, sand or sweat accumulates.

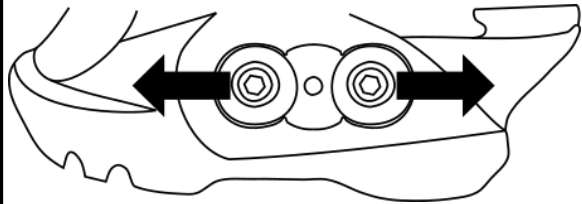
Change it when worn out.

Note: Make sure that the 2nd skin surpasses the plastic by 3-4 mm to avoid any contact between this and the horse's skin.

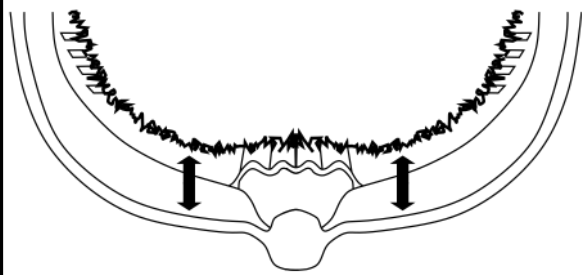
ADAPTING → *Heat adaptation is NOT a must & it's only advised for non standard hooves (deformed, slightly flared, too high or too low dorsal angle...)*

ADJUSTING → *Adjusting your Evos to your horse is SUPER Easy!*

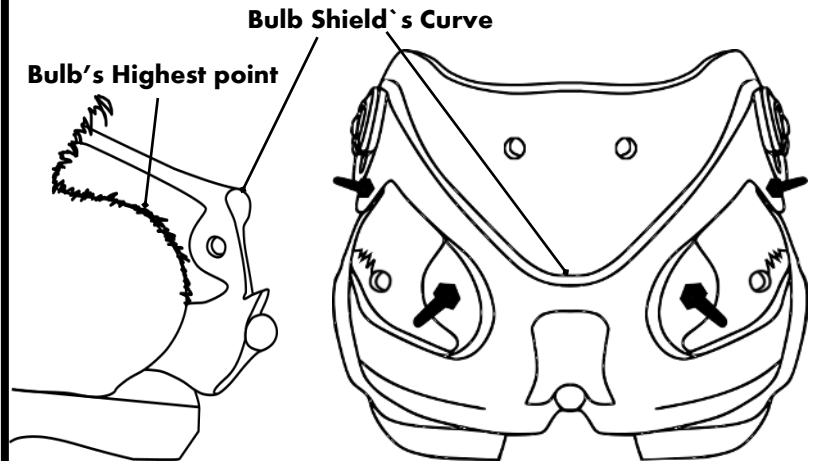
Trick 1 Adjust the LENGTH



Change the screws position until the inner side of the bulb shield's base makes intimate contact with the horse's heels.



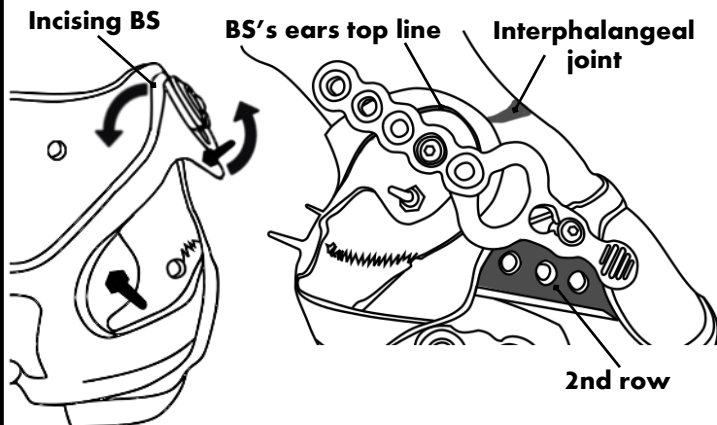
Trick 2 Check the HEIGHT



Make sure that the Bulb Shield's Curve surpasses the horse's Bulb's curve highest point.

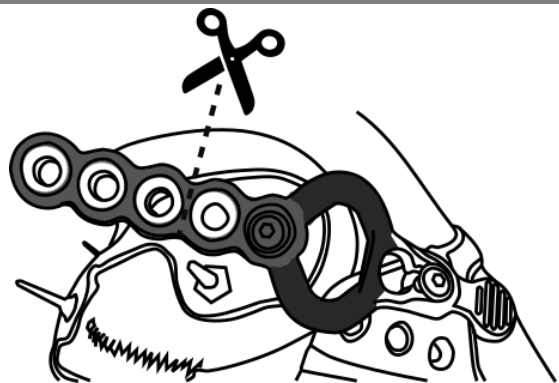
Note: With high heels, use one screw per side & simply roll or pivot the Bulb Shield, so it can reach the appropriate height..

Trick 3 Check the BS's ears ANGLE & HEIGHT



Ideally BS's ears should sit flat or parallel to the lateral cartilages & stay below the interphalangeal joint. If they have an incising angle against the skin change the Pivot's position to the 2nd row of holes.

Trick 4 Adjust Elastostop's TENSION



Change the screw position until you feel a slight tension when closing it (1st and 2nd holes are the most used ones). Cut the excess leaving an extra hole.

Note: Elastostop Direct is a 2ndary closing system so it's NOT what maintains the boot in place!

- 1.- Don't let the children access the contents
- 2.- Minors must use the boot under adult supervision
- 3.- Manipulate the material using security elements
- 4.- Evohorse won't take any responsibility for the misuse of the material.
- 5.- More details in the extended manuals & Evohorse Videotutorials
- 6.- Any question or problem, please ask your dealer

